



**Joanne L Crisp**  
Principal Property Practitioner  
Registered with PPRA  
(FFC 202 322 001 2)  
083 269 0881

joanne.crisp@propcoresa.co.za

Contact Propcore Real Estate

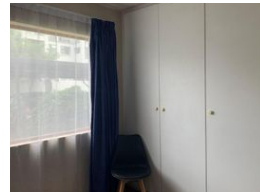
010 0108719

Oak Avenue Office Park  
376 Oak Avenue  
Ferndale  
Randburg  
2194

FEATURED



Web Ref RL7378



**R1,100,000**

2 2

**Monthly Bond Repayment** R11,354.07

Calculated over 20 years at 11% with no deposit.

**Transfer Costs** R32,749.00 **Bond Costs** R25,220.00

These calculations are only a guide. Please ask your conveyancer for exact calculations.

**Monthly Levy** R2,121 **Sectional Title Levy** R32

## Two bed two bath garden apartment

Welcome to this spacious corner garden apartment in the heart of Paulshof.

Offering a large open plan kitchen with granite counter tops, space for all the appliances and fitted with lots of built in cupboards, including a corner pantry cupboard.

Spacious tiled dining and living room space that opens out onto a large covered patio and walled garden.

Both bedrooms are carpeted and have built in cupboards. The main has views over the garden.

Two bathrooms, the main ensuite has a bath only and the family a shower only.

Covered carport and ample visitor parking.

Lavender lane is a secure estate offering a safe family environment, compete with swimming pool and children's play area. Set in a cul de sac offering a quiet home to move into.

Paulshof is centrally located between Sunninghill and...

## Features

**Pets Allowed** Yes

### Interior

Bedrooms	2
Bathrooms	2
Kitchens	1
Recep. Rooms	1
Furnished	No

### Exterior

Carports / Parkings	2
Security	Yes
Pool	Yes

### Sizes

Floor Size	99m <sup>2</sup>
------------	------------------

### Extras

Built-in Wardrobes Covered Parking Pets Allowed Private Garden Security Shared Pool  
Children's Play Area Dishwasher Connection Granite Tops Guard House Patio

